



CoBe Capital specializes in the acquisition and operation of non-core and underperforming business units in the Americas and Europe from leading global corporations.



**BUS PARTS
WAREHOUSE**

As a leading national distributor, Bus Parts Warehouse supplies replacement parts, product upgrades, and special needs products for the school transportation industry. Bus Parts Warehouse stocks a wide variety of products manufactured by the major industry suppliers and sells to customers across the United States through its outside sales and customer service teams and in-house parts specialists can help customers locate hard-to-find parts.

 **Bus Parts Warehouse: A CoBe Capital Operating Company**

A man wearing a dark jacket, a cap, and jeans is leaning over the front of a yellow school bus, working on the engine compartment. The bus is parked outdoors, and the scene is brightly lit. The man is focused on his task, and the bus's various components like the headlights and mirrors are visible.

Key Facts

Established in 1984

National distribution of aftermarket school bus parts

The Red Book - nationally recognized 328 page catalog of aftermarket school bus parts

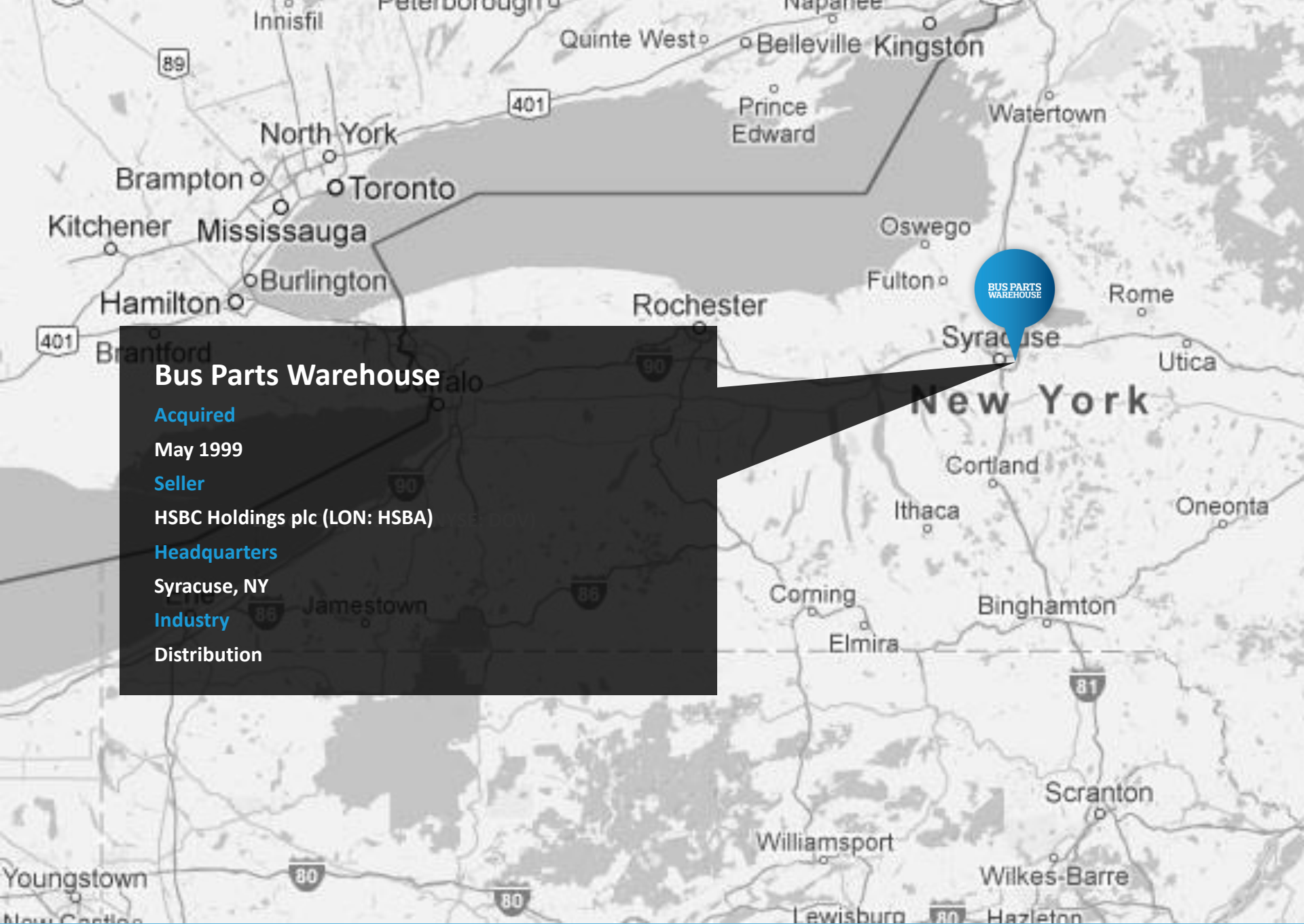
Industry's largest in-stock parts inventory

Technical service help desk

In-house seat cover manufacturing

"I am excited to have David join Bus Parts Warehouse and prepare the business for its second decade under CoBe Capital's ownership. I believe that he can effectively expand the business over the next 18 months to significantly enhance profitability," said Neal Cohen, Founder and Managing Director at CoBe Capital."

Neal Cohen
Founder and Managing Director, CoBe Capital



Bus Parts Warehouse

Acquired

May 1999

Seller

HSBC Holdings plc (LON: HSBA)

Headquarters

Syracuse, NY

Industry

Distribution